



Middle Creek

Energy Hub



Welcome to the latest edition of the Middle Creek Energy Hub Newsletter

Edition 4, February 2026

The Middle Creek Energy Hub is a proposed 1.317GW renewable energy project located approximately 10km east of Wandoan and Guluguba and about 60km north of Miles in Queensland's Western Downs Regional Council area.

The project site is approximately 30,000 hectares and sits on mainly cleared land used for cattle grazing. The site was chosen due to its strong wind resources and is strategically located within the Western Downs Renewable Energy Zone. Where possible, the project will be designed to integrate with existing land uses.

The development includes up to 181 wind turbines and the potential for a battery energy storage system (BESS) providing up to 800MWh of storage and grid stabilising services.

Once operational, the Middle Creek Energy Hub project will help deliver clean, reliable and affordable energy to up to 700,000 households and businesses across the state. Construction is targeted to commence in 2027 with operations expected to begin by 2030.

The project at a glance



Up to 181 wind turbines



Generating up to 1.303GW of clean energy



Battery Energy Storage System (BESS) up to 800MWh



300 jobs during construction
20 ongoing roles



Pre-development fund supporting local community groups since 2023



Construction to start 2027
Operations from 2030



An update from the Development Manager

Since our last update in September 2025, the project team has continued to spend time in the community, catching up with familiar faces and meeting new people across the Western Downs region. We've enjoyed being involved in a number of local events and conversations, giving us the chance to share updates on the project, answer questions and hear directly from residents about what's important to the community.

One of the key highlights was again being part of the Wandoan Camel Races, where Cubico was proud to be a gold sponsor. Several members of the team attended on the day, with some even taking part in the races! We all enjoyed chatting with locals, businesses and families in such a relaxed and fun setting. Events like these are a great reminder of the strong sense of community in the region.

Alongside this engagement, planning and technical work on the Middle Creek Energy Hub has continued to progress. This includes environmental, social and technical studies that help us better understand local conditions and ensure the project is planned responsibly.

Cubico submitted a Public Environmental Report as part of our application under the Environmental Protection and Biodiversity Conservation (EPBC) Act. After the application has been reviewed by the Department of Climate Change, Energy, the Environment and Water (DCCEEW), there will be a public exhibition period where feedback can be submitted. We will provide an update once the timeline is confirmed.



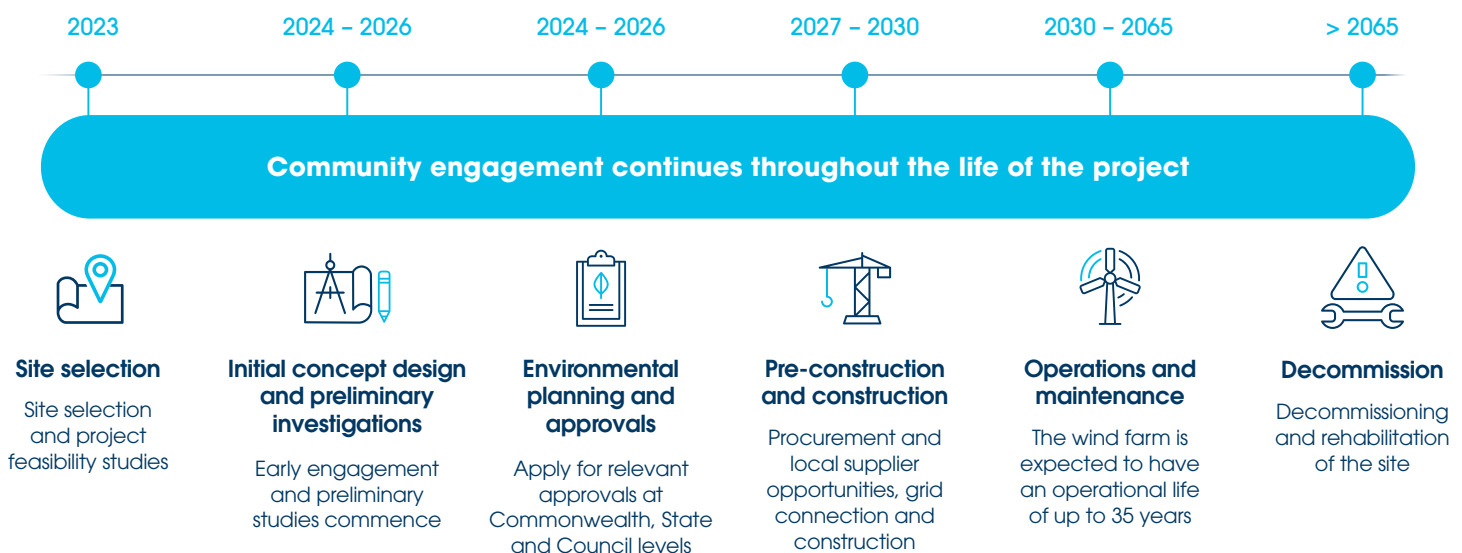
We've also been pleased to continue supporting local organisations and events through Cubico's Community Grants and Sponsorships program. From community events and festivals to wellbeing and safety initiatives, these sponsorships are about giving back early and supporting the people and groups that help make the region such a great place to live, work and visit.

In this edition, we have shared an update on the project, a summary of the Social Impact Assessment, highlights from our latest community engagement activities, and an overview of recent community sponsorships and grants.

If you have any questions about the project, please reach out to the team on **1800 282 246** or email **middlecreek@cubicoinvest.com**. From the Cubico team, we wish you a great year ahead, and look forward to continuing our conversations with the local community as we move through the next stages of the project.

Rupert Alstergren
Development Manager,
Middle Creek Energy Hub

Indicative Project Timeline



Social Impact Assessment

What we heard and why it matters



As part of the planning process for the Middle Creek Energy Hub project, a Social Impact Assessment (SIA) has been undertaken to better understand how the project could affect the local community over its lifetime. Attexo, an energy, resources and infrastructure advisory firm, was engaged to support us in preparing a SIA for the project.

The SIA brings together feedback from extensive engagement carried out for the project to date. This includes ongoing project engagement with landholders and neighbours, as well as two phases of targeted community engagement undertaken as part of the Construction Worker's Accommodation Options Report and the Workforce Accommodation and Infrastructure Report. This feedback has been considered alongside local data and technical studies to build a clear picture of potential social impacts and opportunities.

Engagement for the SIA involved a broad cross-section of the community, including nearby residents and landholders, local businesses and service providers, community organisations, Western Downs Regional Council and other key stakeholders. These conversations provided valuable insight into local priorities, concerns and expectations.

Through this process, several key themes were identified, including:



Local employment and business opportunities, including interest in local jobs, training pathways and procurement opportunities for regional businesses.



Workforce accommodation, with an emphasis on avoiding pressure on local housing, accommodation and services.



Traffic, transport and road safety, particularly during construction.



Community health and wellbeing, including potential impacts to amenity and day-to-day life.



Access to services and infrastructure, such as health, education, emergency services and community facilities.



Population change and workforce management, including managing temporary population increases responsibly.



Community cohesion and social connection, and maintaining the character and identity of local towns.



Long-term community benefits, including how benefits can be shared fairly and in ways that reflect local priorities.

What happens next?

Cubico is committed to putting the Western Downs community first. Our approach aims to build strong, lasting partnerships, empower the community to shape local benefits and ensure the social and economic outcomes of the project extends well beyond its operational life.

The findings of the SIA will help guide how the project is planned and managed as it progresses. The SIA will also inform the development of a Community Benefit Agreement, being developed in collaboration with Western Downs Regional Council. This agreement is intended to help ensure the project delivers positive, long-term outcomes that reflect local priorities.



In the community

Late last year, the Middle Creek Energy Hub team spent time out in the community, catching up with residents, landholders, businesses and community groups across the Western Downs region. These conversations took place through informal catch-ups, meetings and community events, including the Wandoan Camel Races, where the team enjoyed the chance to chat with locals in a relaxed setting. We shared updates on the project, answered questions and, listened to what people had to say.

Common topics raised during these conversations included local employment and business opportunities, workforce accommodation, traffic and road use, and how the project could deliver benefits for the region over the long term.

We value these conversations and sincerely thank everyone who took the time to have a chat. Community engagement will continue in the months ahead, with more opportunities to meet the team, ask questions and share feedback as the project progresses.

Supporting growth across the region

Cubico is focused on ensuring the Middle Creek Energy Hub delivers meaningful, long-term benefits for the Western Downs that extend well beyond construction.

By working closely with Western Downs Regional Council, Traditional Owners, local businesses, training providers and community organisations, the project aims to support regional capability, skills development and sustainable economic growth.

Subject to approvals, construction of the project is expected to generate a significant number of jobs across a wide range of trades and professions, including civil and electrical works, logistics and technical support. In addition to direct employment, construction activity has the potential to support local businesses and services such as accommodation, transport, catering and equipment hire.

Independent economic analysis indicates that, averaged across the construction period (expected between 2028 and 2030), the Middle Creek Energy Hub could contribute around **\$464 million per year** to the Queensland economy, including approximately **\$112.6 million per year** within the Darling Downs region.

During this time, construction activity is expected to support an average of **523 full-time equivalent jobs per year** in the Darling Downs, along with increased wages and salaries across the region.

Once operational, the Middle Creek Energy Hub is expected to continue contributing to the local and state economy each year. This includes an estimated **\$25.35 million per year** to the Queensland economy, along with around 20 ongoing roles to support turbine operations and maintenance, helping ensure specialist skills and long-term employment opportunities remain in the region.

Together, these potential benefits reflect Cubico's commitment to working with the community to maximise opportunities for the region, while managing impacts responsibly and in line with community expectations.

Potential economic benefits to Queensland and the Darling Downs region

The below data provides the expected economic contributions of the Middle Creek Energy Hub, averaged **per year** across the **construction period** (2028–2030).

Queensland		Darling Downs region	
\$464.19 million	towards the state economy	\$112.64 million	towards the regional economy
2,608	full time jobs created	523	full time jobs created
		\$57.22 million	increase in wages and salaries

The below data provides the expected economic contributions during the project's **operational life**:

\$25.35 million	towards the state economy each year
20 jobs	new and ongoing jobs created

Sources include: REMPLAN, Queensland Regional Profiles, Economy ID, ABS.

Community Grants and Sponsorships



Supporting local initiatives

Cubico has proudly awarded more than \$120,000 in community grants and sponsorship funding to support local organisations and events across the Western Downs region, near our proposed Middle Creek Energy Hub and Marmadua Energy Park projects.

This funding supports a wide range of local initiatives, including:

- **Community events and festivals**, such as the Wandoan Camel Races, Dalby Delicious and Delightful Festival and the Wandoan Show
- **Community infrastructure upgrades** that improve access, safety and usability
- **Education, wellbeing and emergency response programs**, including LifeFlight's *First Minutes Matter* training.

Cubico's approach is to invest early and support initiatives that strengthen community connection, resilience and wellbeing, recognising that communities can experience the impacts of a project well before construction begins.

Kaitlin James from the Wandoan Camel Races Committee said the event helped raise \$120,000 for the Wandoan & District Kindergarten.

"The funds raised will directly enhance learning environments and opportunities for local children – a meaningful and lasting impact that we are deeply appreciative of."

Strengthening resilience and wellbeing through important partnerships

Cubico has partnered with Farm Angels, a grassroots organisation dedicated to supporting Australia's farming and rural communities.

Farm Angels provides emergency relief and care packs, mental health support and programs that help farming families recover and build lasting resilience.

"Your recognition of the challenges our farmers face, and your commitment to supporting resilience and wellbeing, means so much. Partnerships like this help us deliver real, tangible support where it's needed most – from emergency relief to mental health care and long-term recovery. We're proud to walk alongside you as we work together to strengthen the backbone of our nation." – Farm Angels spokesperson.

Cubico's benefit-sharing programs are designed to reflect local priorities and deliver lasting value for nearby residents and the broader region. These may include support in areas such as education and training, community infrastructure, tourism, arts and culture and environmental initiatives. The details of these programs will be developed in consultation with the local communities as each project progresses.

We're proud to partner with local organisations, volunteers and community groups who make these initiatives possible, and we look forward to continuing our grants and sponsorship programs into 2026.

More than \$83,000 invested into the local community

Since launching our Grants and Sponsorship Program in 2024, Cubico has invested in a range of initiatives in the local area around our Middle Creek project, including:

\$16,000 Wandoan Show's refurbishment of the Willacy Pavilion

\$27,000 Wandoan Show

\$6,000 Wandoan Christmas Carnival 2024 and 2025

\$6,000 WDRC Big Skies Festival

\$10,000 LifeFlight

\$500 Wandoan Clay Association's Two-Day Shoot Competition

\$2,500 Juandah Heritage Society's QLD Day celebrations

\$10,000 Wandoan Camel Races

\$5,000 Wandoan Community Campdraft



Work with us!

We are committed to prioritising local procurement and ensuring the project provides economic benefits to the community.

If you're a local business or service provider interested in working with the project, scan the QR code and complete the online form to register your interest or visit www.middlecreekenergyhub.com.au/opportunities



Cubico recognises the First Peoples of this nation and their ongoing connection to culture and country.

We acknowledge First Nations Peoples as the Traditional Owners, Custodians and Lore Keepers of the world's oldest living culture and pay respects to their Elders past, present and emerging.

Contact us

If you're interested in being involved and staying up to date on the Middle Creek Energy Hub project, please contact us.

Phone: **1800 282 426**

Email: middlecreek@cubicoinvest.com

www.middlecreekenergyhub.com.au



Visit the project website

